

METER BOX ADAPTORS

CRIMP 'C' CLIP - CRIMP STAB-IN - CRIMP SEMI CONCEALED



FROM MAINS TO METER

METER BOX ADAPTORS

WASK is a major manufacturer of 'Mains to Meter' service fittings for gas industries throughout the world. Systems are produced for use with polyethylene and steel services and ferrous mains, enabling the Engineer to select the most suitable system for each installation.

CRIMP FITTINGS

This range has been specifically developed to provide an easy, yet positive method of connecting metric polyethylene pipe to metal pipe or ancillary equipment. Meter Box Adaptors are manufactured of sizes 16 to 32mm. A Crimp joint is made by pushing the pipe onto the spigot of a fitting and crimping the copper ring with a rugged hand operated tool. The joint is

designed to be stronger than the pipe and will resist end load pull-out well beyond loads at which failure of the polyethylene pipe occurs. GRP protection sleeving location are provided for above ground applications.

QUALITY ASSURANCE

Crane BS&U is a Registered Firm of Assessed Capability for the production of goods or services in accordance with BS EN ISO 9001 – FM 00311.



APPROVALS

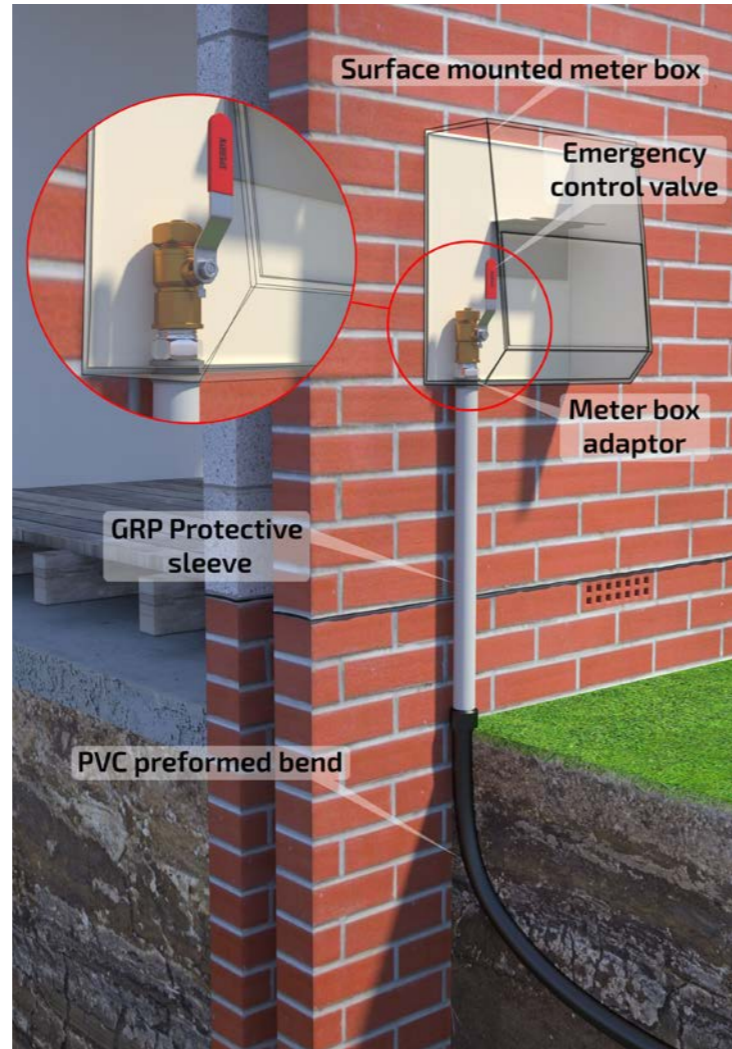
Where applicable, fittings comply with the requirements of the following British Gas Engineering Specifications:



CUSTOMER BENEFITS

- Fast and easy installation
- Extensive size ranges available
- Fully corrosion protected
- Extra corrosion protection on semi-concealed type meter boxes
- Simple crimp tool
- Fast action C Clip mounting to the meter boxes
- Crimp connection to PE pipe

CRIMP 'C' CLIP METER BOX ADAPTOR



CRIMP "C" CLIP METER BOX ADAPTOR

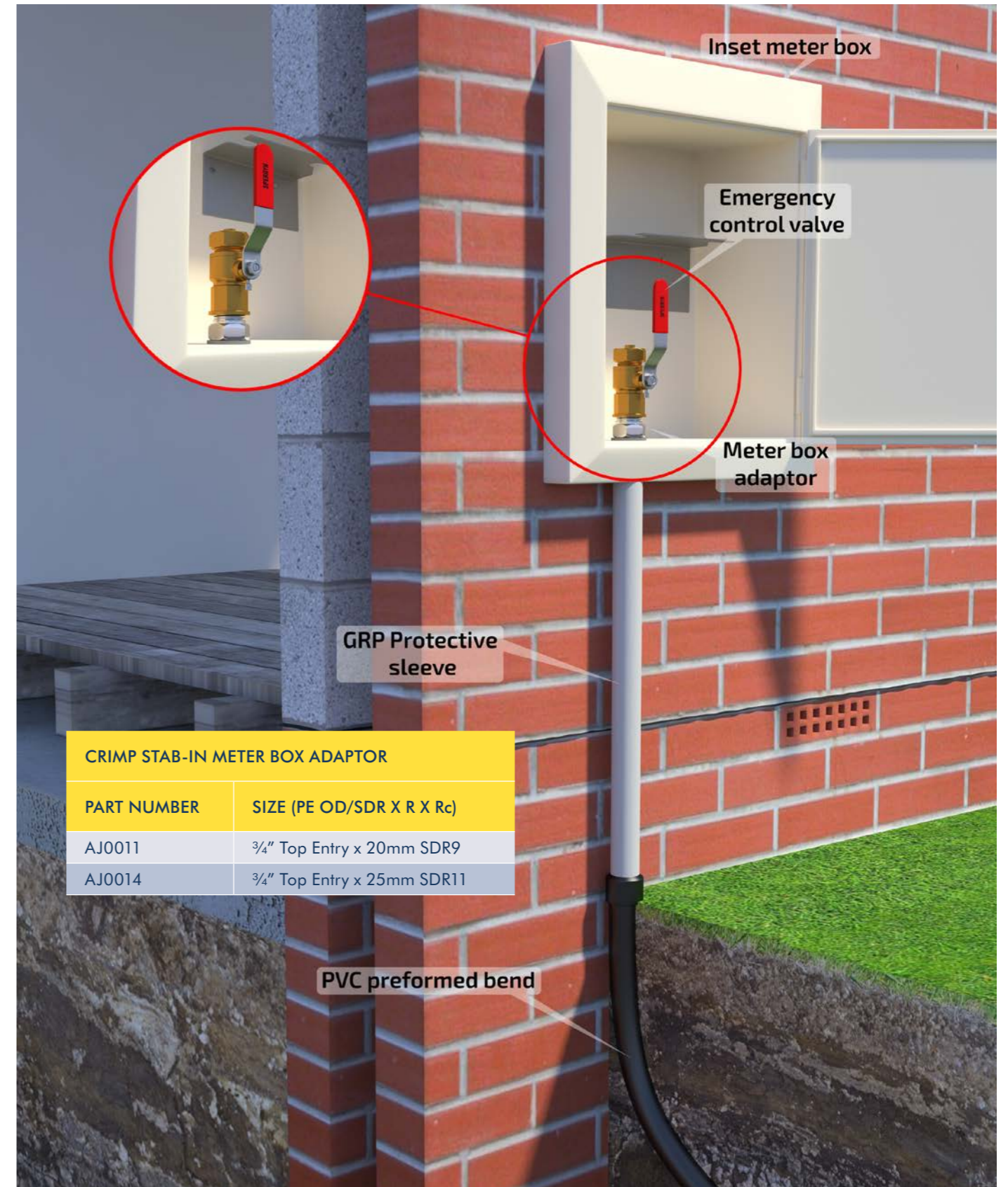
PART NUMBER	SIZE
AJ0006	MBA CRMP 16/7 x 1/2 ZP
AJ0008	MBA CRMP 20/9 x 3/4 ZP
AJ0012	MBA CRMP 25/11 x 3/4 ZP
AJ0015	MBA CRMP 32/11 x 3/4 ZP
AJ0017	MBA CRMP 32/11 x 1 ZP

MATERIALS & APPROVALS

PART	MATERIALS
Finish	Zinc Plated
Body	Steel
C-Clip	Polymeric
O-Ring	NBR
Disc	Polymeric
Crimp Tube	Copper Alloy

The Meter Box Adaptor is designed constructed and tested fully in accordance with clause 6.2.5. of GIS/PL/3.

CRIMP STAB-IN METER BOX ADAPTOR



CRIMP STAB-IN METER BOX ADAPTOR

PART NUMBER	SIZE (PE OD/SDR X R X Rc)
AJ0011	3/4" Top Entry x 20mm SDR9
AJ0014	3/4" Top Entry x 25mm SDR11

CRIMP SEMI-CONCEALED METER BOX ADAPTOR



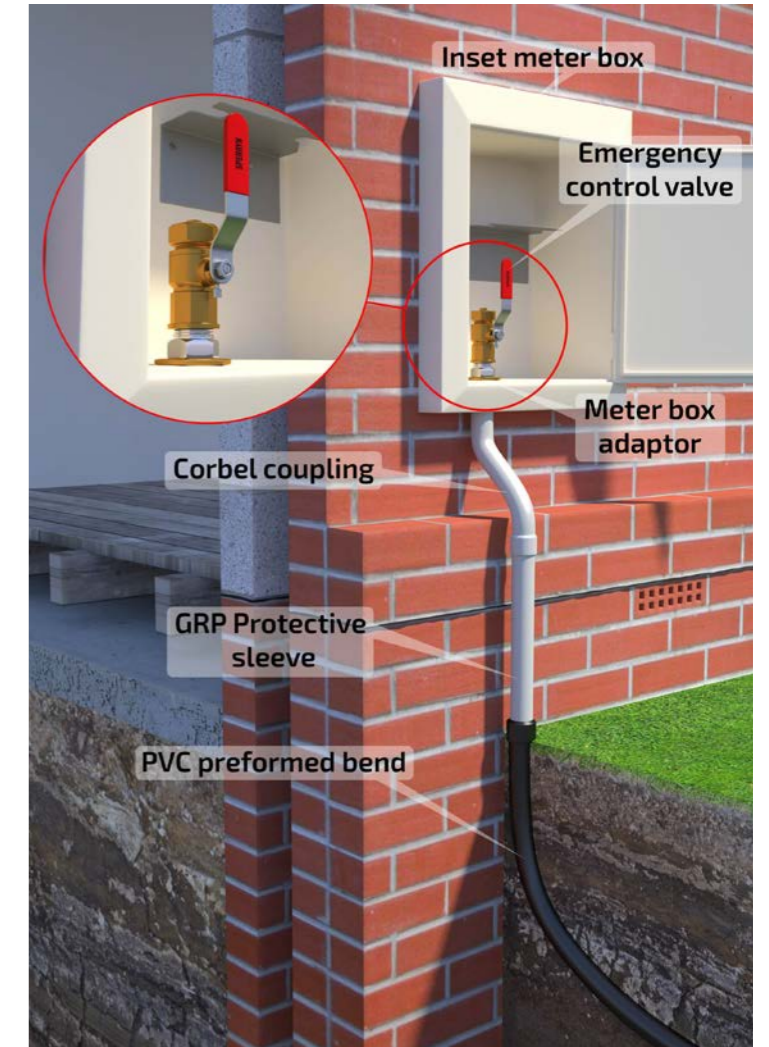
CRIMP SEMI-CONCEALED METER BOX ADAPTOR	
PART NUMBER	SIZE
AJ0009	MBA CRMP 32/11 x 3/4 SEMI ZP
AJ0010	MBA CRMP 20/09 x 3/4 SEMI ZP
AJ0013	MBA CRMP 25/11 x 3/4 SEMI ZP
AJ0035	MBA CRMP 25/11 x 3/4 SEMI EXT ZP
AJ0036	MBA CRMP 32/11 x 3/4 SEMI EXT ZP

MATERIALS & APPROVALS

PART	MATERIALS
Finish	Zinc Plated
Body	Steel
C-Clip	Polymeric
O-Ring	NBR
Disc	Polymeric
Crimp Tube	Copper Alloy

The Meter Box Adaptor is designed constructed and tested fully in accordance with clause 6.2.5. of GIS/PL/3.

CRIMP SEMI-CONCEALED METER BOX ADAPTOR



CRIMP SEMI-CONCEALED METER BOX ADAPTOR	
PART NUMBER	SIZE
AJ0001	MBA CRMP 20/9 x 3/4 CORB
AJ0003	MBA CRMP 25/11 x 3/4 CORB
AJ0004	MBA CRMP 25/11 x 3/4 CORB
AJ0005	MBA CRMP 32/11 x 3/4 CORB
AJ0019	MBA CRMP 32/11 x 3/4 CORB

MATERIALS & APPROVALS

PART	MATERIALS
Finish	Corbelled Tube finish Epoxy Polyester
Body / Nut / Washer	Zinc Plated Steel
Seal	NBR
Crimp Tube	Copper Alloy

The Meter Box Adaptor is designed constructed and tested fully in accordance with clause 6.2.5. of GIS/PL/3.



46-48 WILBURY WAY, HITCHIN,
HERTFORDSHIRE, SG4 0UD

TELEPHONE: +44 (0)1462 443226

TELEPHONE: +44 (0)1462 443227

FAX: +44 (0)1462 443311

EMAIL: sales@wask-uk.com

www.wask-uk.com



ISO 14001 Reg No. EMS 78657

- Designed & manufactured under quality management systems in accordance with BS EN ISO 9001:2008

Every effort has been made to ensure that the information contained in this publication is accurate at the time of publishing. Crane Ltd assumes no responsibility or liability for typographical errors or omissions or for any misinterpretation of the information within the publication & reserves the right to change without notice.



To visit our Video Library go to:
www.youtube.com/user/CraneBSU

W_MBA_1116

FROM MAINS TO METER

CRANE BUILDING SERVICES & UTILITIES

www.cranesbu.com

