

PE CRIMP JOINTING INSTRUCTIONS HAND TOOL (32mm & 25mm)



1. Remove crimp ring & rubber spacer.

2. Cut PE pipe to required length. Ensure pipe is square & free from burrs.

3. Slide GRP sleeve, spacer rubber & crimp ring onto the PE pipe & discard the cardboard packing.

4. Carefully peel back the shroud. Make sure the plastic washer is in place.

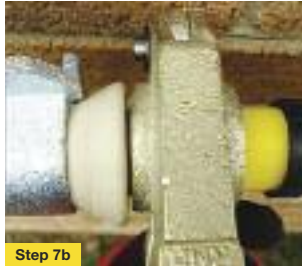
5. Push the pipe fully onto the spigot of the fitting.

6. Slide the crimp ring up to the plastic washer. The washer & crimp ring must be pushed against the shoulder of the spigot.



PE CRIMP JOINTING INSTRUCTIONS

HAND TOOL (32mm & 25mm)



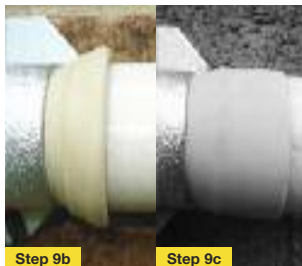
7. Carefully position the correct size of crimp tool centrally over the copper crimp ring. Close the jaws of the crimp tool lightly over the crimp ring, once again, check the tool is centrally positioned & the crimp ring, washer is against the shoulder of the spigot.



8. Screw the jaws of the crimp tool fully together. (ie, crimp jaws fully closed) to complete the joint.

DO NOT attempt to re-crimp once the tool has been removed from the joint.

DO NOT re-orientate the crimp tool on a partially completed joint.



Step 9c

9a. Slide the spacer rubber over the crimp ring.

9b. Carefully push the GRP sleeve over the spacer rubber & push up to the plastic washer.

9c. Gently roll the shroud over the GRP sleeve.

PE CRIMP JOINTING INSTRUCTIONS

POWER TOOL (63mm)



1. Remove crimp ring dispose of cardboard protection sleeve.
2. Carefully Roll back shroud to enable crimp access.
3. Cut PE to required length (ensure pipe is square and free from burrs) – Place crimp ring on pipe and place PE pipe over metal insert.
4. Slide PE as far down spigot as possible – (butt up to the plastic washer.
5. Slide crimp ring into position butting up to plastic washer.
6. Position crimp tooling over crimp ring (crimp tool covers all the ring fully).

PE CRIMP JOINTING INSTRUCTIONS POWER TOOL (63mm)



7. Ensure the crimp ring is pushed up to the plastic washer.

Operate crimp tooling to perform crimp.

8. When complete remove crimp tool - tooling releases when complete.

9. Slide over GRP into position.

10. Roll back shroud to complete.



To visit our Video Library go to:
www.youtube.com/user/CraneBSU



DELTA ROAD,
ST HELENS, NWA9 2ED

TELEPHONE: +44 (0)1744 458649
FAX: +44 (0)1744 453675
EMAIL: sales@wask-uk.com

www.wask-uk.com



FM311 ISO 9001



www.flowoffluids.com

Visit www.flowoffluids.com to book your copy of the New Technical Paper 410.

- Designed & manufactured under quality management systems in accordance with BS EN ISO 9001:2008

Every effort has been made to ensure that the information contained in this publication is accurate at the time of publishing. Crane Ltd assumes no responsibility or liability for typographical errors or omissions or for any misinterpretation of the information within the publication & reserves the right to change without notice.

W_CJ_0812
IOM_JR0077_V1